



Managing future landscapes in NSW

Next generation catchment action plans

Bryce Wilde
Acting Executive Director





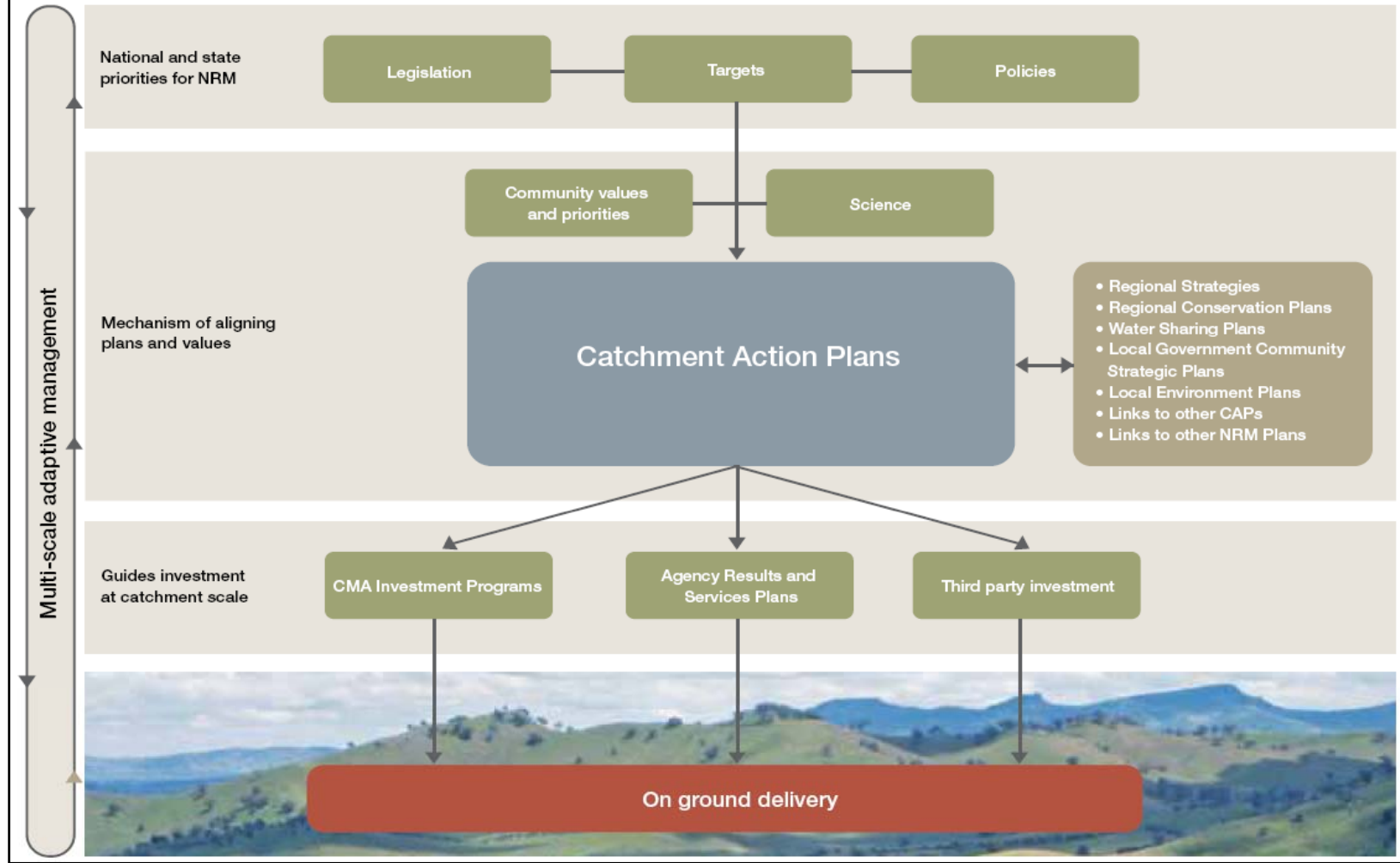
NRC's role in catchment planning:

Assessing Catchment Action Plans (CAPs)

Auditing CAP implementation

Progress reporting

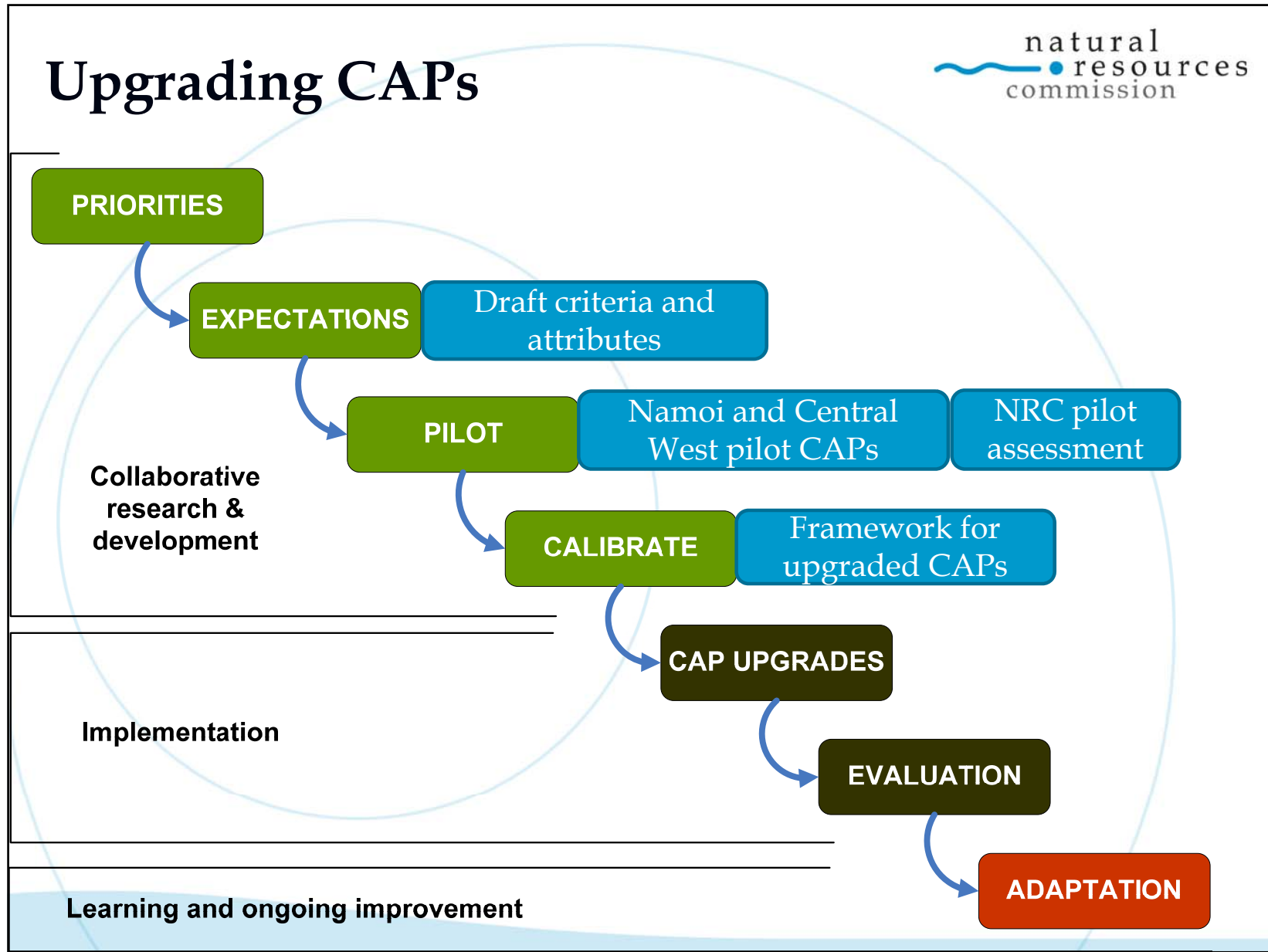
NRC's vision for CAPs

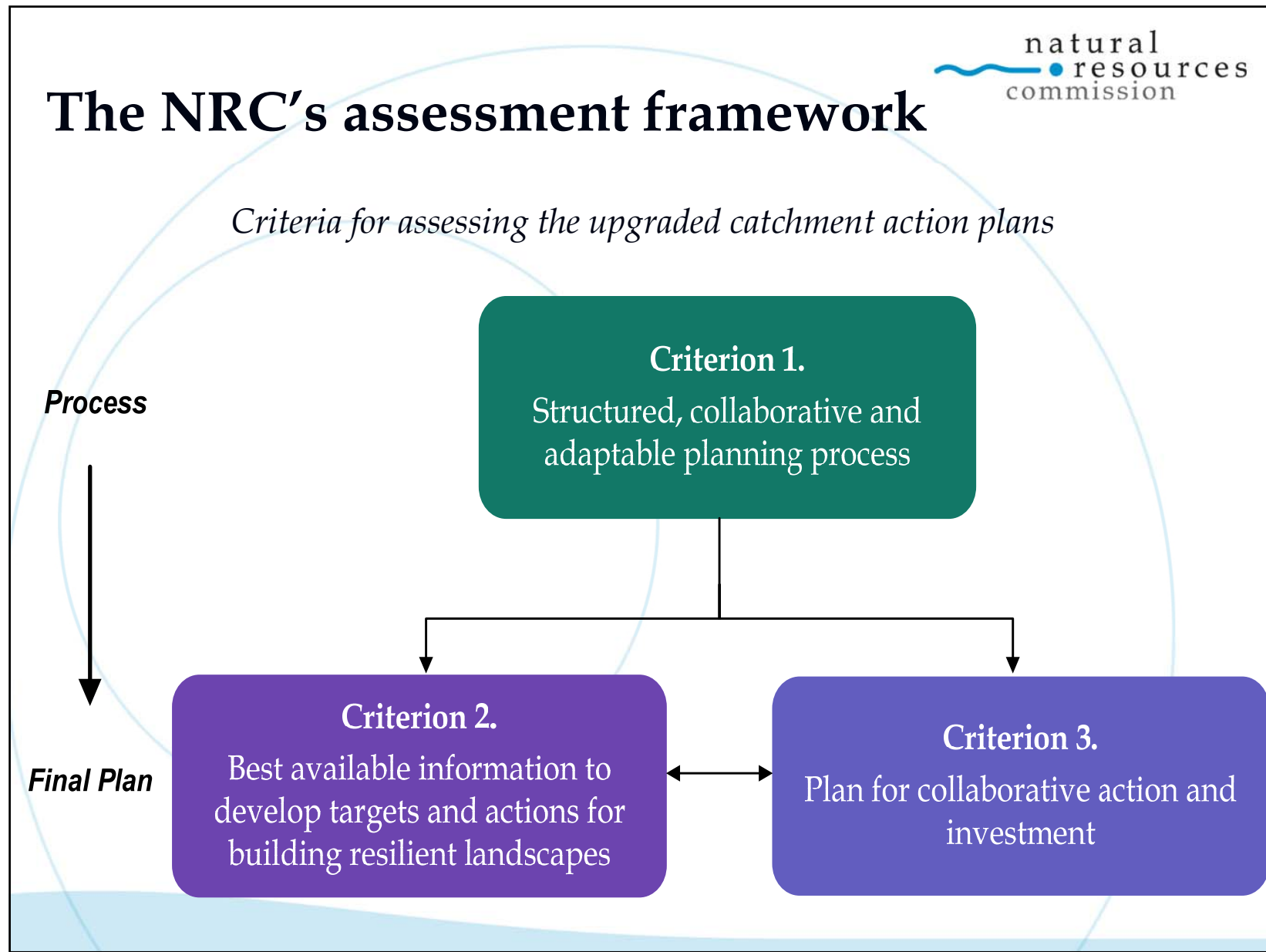




To achieve the vision, we needed:

- 1. Quality CAPs owned by government**
- 2. Decision making supported by science**
- 3. Better prioritisation and strategic thinking**
- 4. Understanding landscapes as systems, not silos**
- 5. Spatially represented priorities**







**What have we learned
so far?**

Quality strategic planning

Devolved decision making works

Start a strategic conversation

Be clear on the plan's
objectives & audience

Be clear on what you know
and what you don't know



Building resilient landscapes

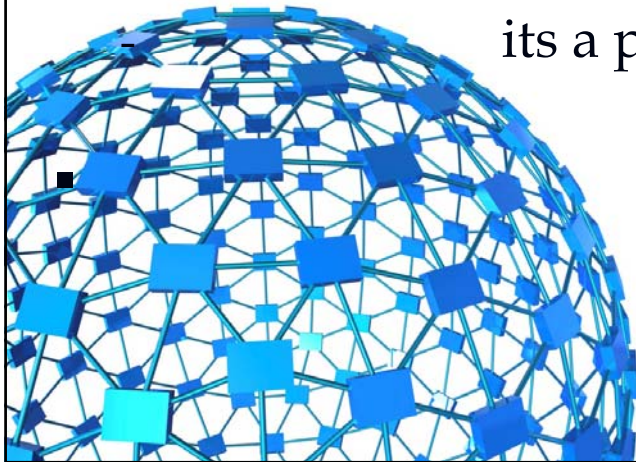
Systems thinking and resilience add value, but are a paradigm shift

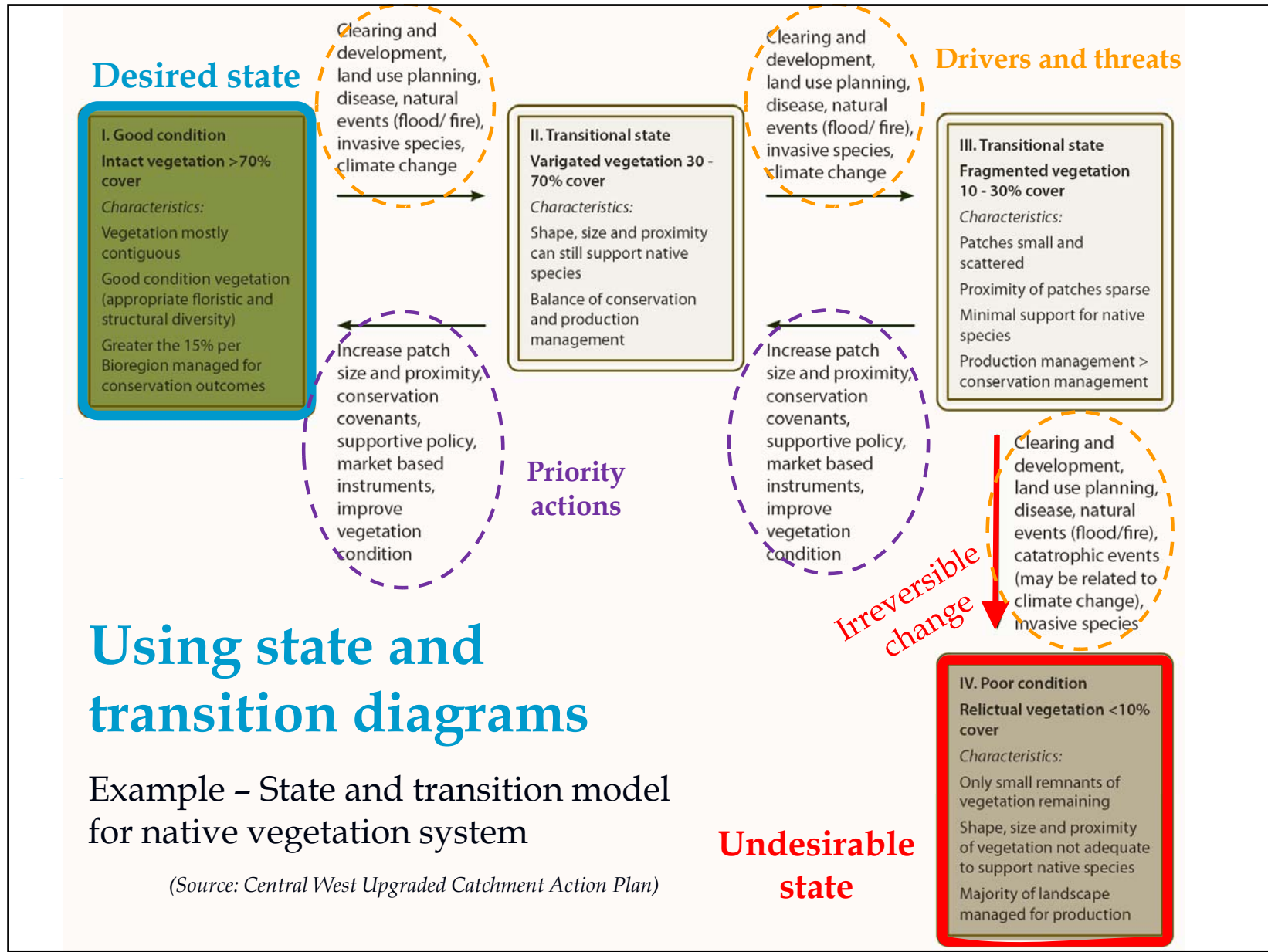
- manage for change
- think systems, not silos

Make sure the science is addressing the right questions

its a planning project, not a research project

Use spatial tools to identify and communicate priorities





Collaboration and alignment

- Whole of government and community planning is achievable and worth pursuing

BUT...

- Collaboration is hard, it takes time and needs trust
- Need to align policies and plans centrally & regionally





**What do we want to
see more of?**

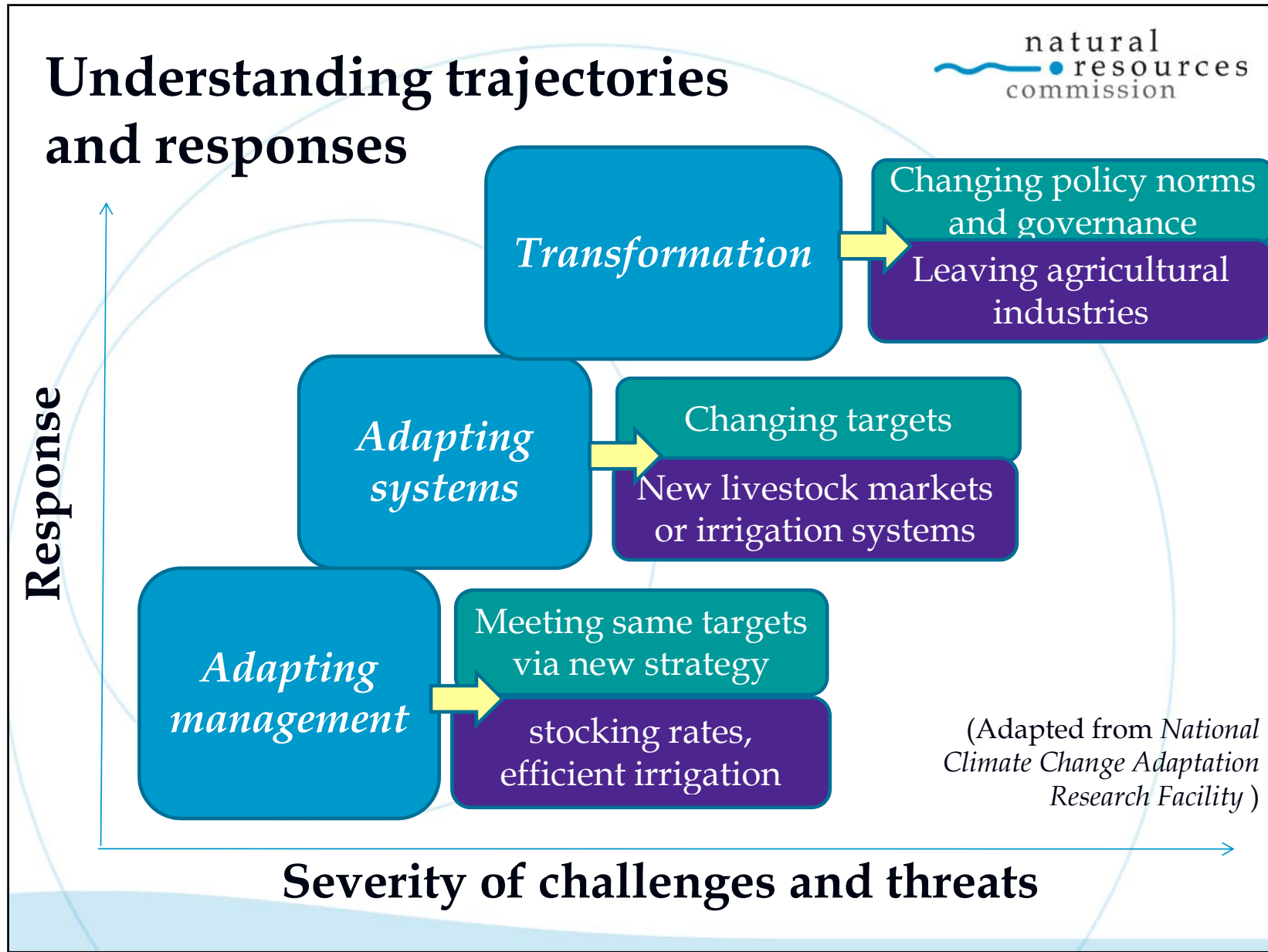
Collaborative adaptive learning

Collecting and sharing evidence with others and learning through CAP implementation

Create stronger links between policy and science

Discovering what does and doesn't work at a policy level and on the ground





Greater regional integration

- Using CAPs to coordinate the actions and investments of multiple government partners
- Bringing together NRM and land-use planning at the strategic, regional scale

